

EASTHAM RECYCLES

Focus on "Tin Cans"



Metal recycling

Metal recycling conserves natural resources by reducing greenhouse gas emissions.

Almost every kind of metal can be recycled again and again!

- "Tin cans"
- Aluminum foil/containers
- Redeemable cans
- Scrap metal
- Appliances
- Water heaters
- Propane tanks

Upcoming dates

- May 17 @ 9am-noon:
Hazardous Waste Collection
@ the Eastham Transfer
Station
- May 26: Memorial Day -
Transfer Station Closed



"Tin can" and aluminum recycling

While "tin can" is a common phrase, most modern food cans are made of steel, often coated with a thin layer of tin or a polymer lining, rather than aluminum.

Before tossing cans and foil in the big bin:

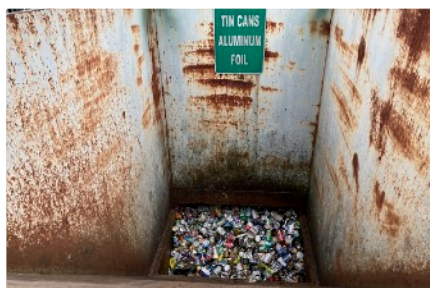
Rinse and Prepare: Rinse your tin cans to remove any food residue.

Lids: Completely remove the lids (also made of steel) and place them inside the can, then pinch the top so it closes.

Aluminum foil/trays/containers: Ensure it's clean, then roll it into a ball.

Redeemables: Put these in the bin at the other end of the recycling area! Proceeds go to Eastham Elementary!





May Focus: Plastic Bags

Pop quiz:

Do you know how many plastic bags per person per year Americans use on average?

For more information

Check out these resources for more information.

- **RecycleSmartMA**
<https://recyclesmartma.org/>
- **Eastham Transfer Station**
<https://www.eastham-ma.gov/384/Solid-Waste->

Contact us

The Recycling Committee is always looking for volunteers as well as members. Contact us via the Eastham Town webpage at:
<https://www.eastham-ma.gov/611/Recycling-Committee>

- May 20 @ 5pm: Recycling Committee Meeting at the Eastham Library

Reduce your consumption of metal

- Rather than using foil wrap and disposable pans, use reusable food containers with lids.
- Repair household appliances rather than buying new.
- Buy for durability: Whenever possible, choose a product that you will use for a long time and be able to maintain and repair should it be necessary. It may cost a bit more up front, but it will save waste and money in the long run.
- Borrow, lend, share: Consider sharing tools and household equipment (ladders, hammers, garden tools) with friends and neighbors
- Sell or give away working items you no longer need rather than throw them out.

Metal recycling

The Institute of Scrap Recycling Industries (ISRI) reports that recycling metal may cut greenhouse gas emissions by 300 million to 500 million tons.

Steel recycling

- 92% of steel is recycled in the US each year. That's more than paper, glass and plastic combined.
- For every ton of steel recycled, 2500 pounds of iron ore, 1400 pounds of coal and 120 pounds of limestone are conserved.
- Since 1990, technical advances in steel production have reduced energy intensity by 27% and CO2 emissions by 33% per ton of steel produced.
- Steel is the world's most recycled material, with 80 million tons recycled annually in the United States alone.

From <https://stispfa.org/>

